

KANGEN SUI [RW-7]

Manufacture and sale of medical equipment approval number : 219AGBZX00020A01

For your Health and Smile !



From safe and secure water
to delicious water.

Antioxidant Water is to better your health.

Water, we use in our everyday life,
While closely related to our living,
there are many things we do not know about.

More than 70% of our bodies is water,
and more than 2 to 2.5 liters is replaced in our body every day.

The intake water acts variously in our body;
to carry nutrients, maintain body temperature,
and discharge unnecessary substances.
Water is vital "source of life" for human beings.

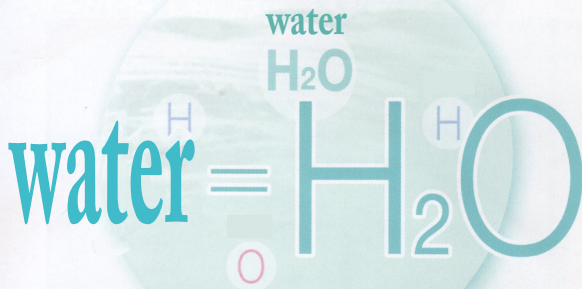
The 21st century that we live is "the Era of Water."
Today, many people purchase mineral water
because it tastes good. Yet, if you seriously think of
"safety of life" and "health of your family", it is
important to pursue "quality of water" for the daily use.

For better quality to your daily drinking water.



Water consists a full of hydrogen.

Antioxidant Water is produced from electrolysis of water.



Water is formed by hydrogen and oxygen combined.

In the chemical formula, water is "H₂O", consists of two Hydrogen and one oxygen, and usually there are inseparable while being water.

The energy of electrolysis is equivalent to an energy of heating water up to 12,000 degrees. Because of using this much of energy, hydrogen and oxygen can be disconnected from one other. This Antioxidant Water system is certified as a medical equipment for home use from the Ministry of Health, Labor and Welfare of Japan. Hydrogen-rich water is "Antioxidant water", and oxygen-rich water is "Electrolyzed Acidic Water". This water system electrolyze directly from your tap water and produce those two types of water simultaneously.

Hydrogen =
(Atomic hydrogen)

Hydrogen

Oxygen

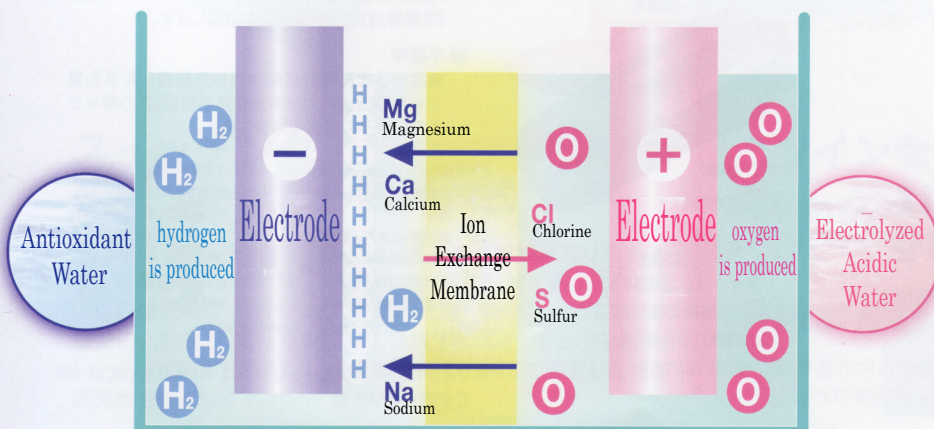
Hydrogen

[KANGENSUI] electrolyzes Water

hydrogen-rich water, "Antioxidant Water", and oxygen-rich water, "Electrolyzed Acidic Water".

Those two types of water can be produced simultaneously.

Principle of Electrolysis



Relationship between Reduction(Deoxidization) and Oxidation

■ Oxidation and is combined with oxygen, losing hydrogen, losing electrons, and the iron to rust, for example. Such reactions are typical of the Oxidation.

■ Reduction(Deoxidization) is compounding with hydrogen, losing oxygen, gaining electrons, and prevent iron from rusting. These are major illustrations for the reaction of Reduction (Deoxidization).

- This instrument is manufactured as a medical device accordingly to the Pharmaceutical Affairs Law of Japan, in Section 4, Article 2, paragraph 6, and certified by the Minister of Health, Labor and Welfare as an medical equipment.

KANGENSHUI RW-7

[Home water system direct connection continuous production type Antioxidant Water purifier]

Manufacture and sale of medical equipment approval number : 219AGBZX0020A01



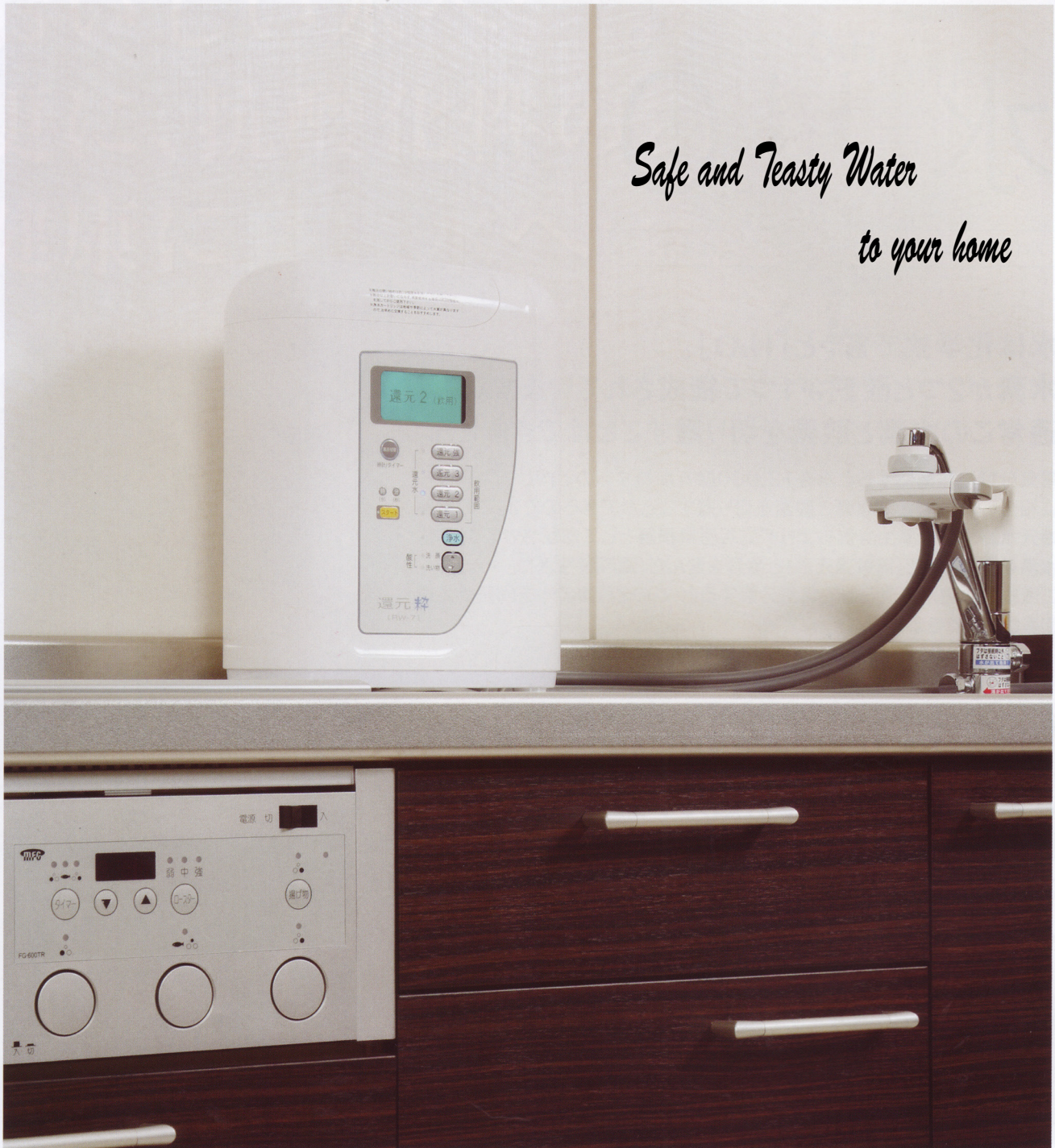
KANGENSHUI RW-7

[Home water system direct connection continuous production type Antioxidant Water purifier]

Effects and Efficacies

Improves gastrointestinal symptoms

To relieve stomach discomfort and indigestion.
help digestion and regulate defecation.



Safe and Teasty Water

to your home

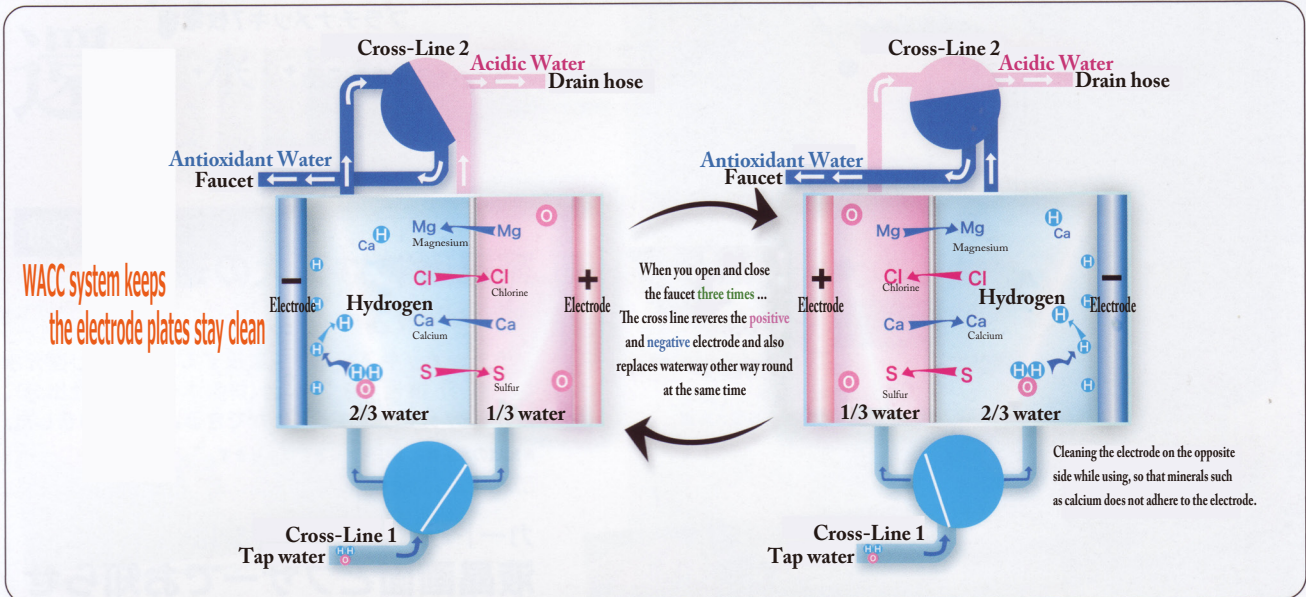
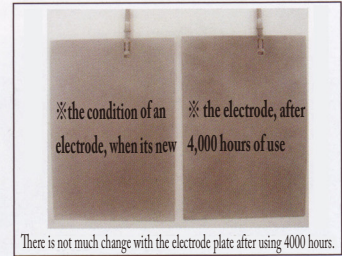
2-way system is adopted to consider ease of use and convenience of an installation location.

Tap water and Antioxidant water can be switched by, as easy as just one lever. The instrument can also be mounted on the wall to fit into your kitchen space.



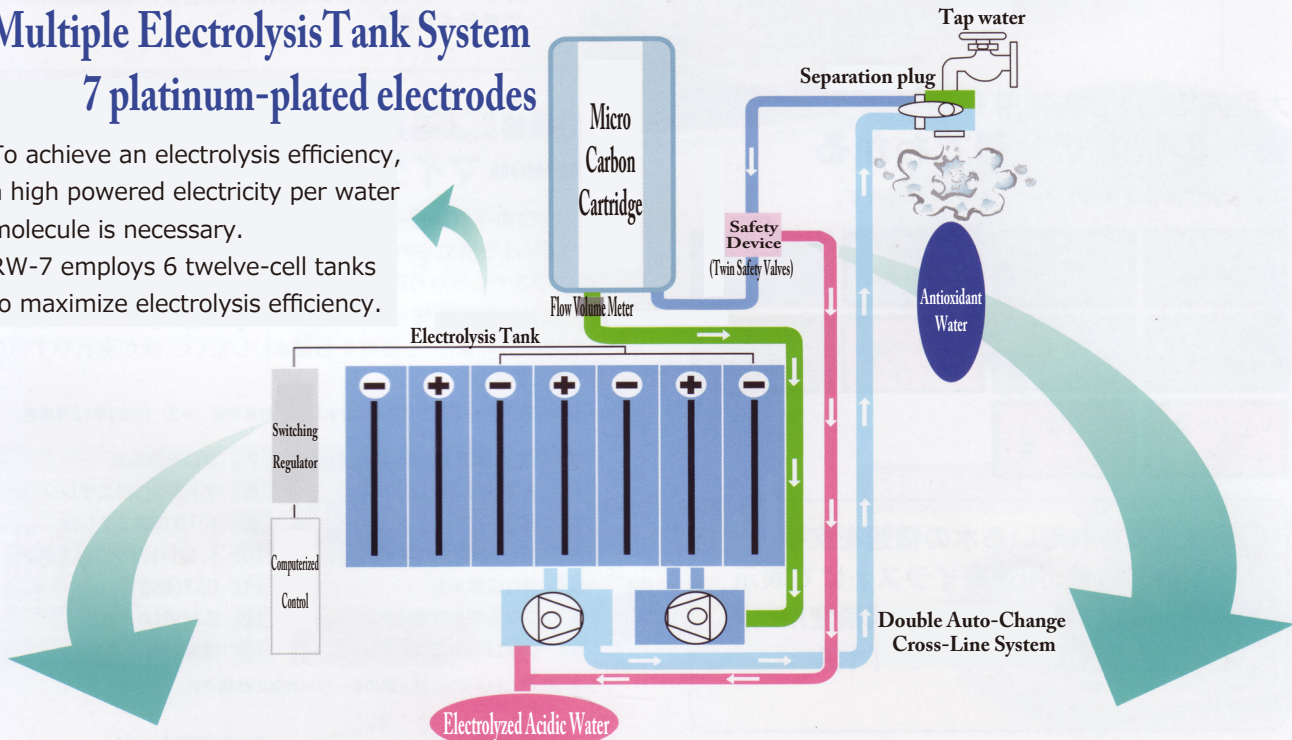
Double Auto-Change Cross-Line System

Since the chemical reaction of electrolysis deposits minerals in water such as magnesium and calcium, to the plate of negative electrode side, after few years of usage, an electrode plate would be covered with minerals, that makes electrolysis difficult to occur.



Multiple Electrolysis Tank System 7 platinum-plated electrodes

To achieve an electrolysis efficiency, a high powered electricity per water molecule is necessary. RW-7 employs 6 twelve-cell tanks to maximize electrolysis efficiency.



Switching Regulator Control System

The quality of tap water varies depending on the time of year, water temperature, the region, and so on. In order to produce Antioxidant Water of the same quality, a constant electrical current must flow through the water in the electrolysis tanks. KANGENSUI is equipped with the Switching Regulator Control System that gives priority to setting the amperage and selects the appropriate voltage automatically, to produce Antioxidant Water of consistent quality.

Twin Safety Valves

KANGENSUI has a safety valve to prevent damage from excessively high tap-water pressure.

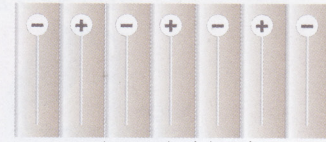
Drain Volume Adjustment Valve

KANGENSUI lets you adjust the ratio of Antioxidant Water to drain water. This also makes it possible to adjust the concentration of the antioxidant water.



Maximized electrolysis efficiency Multiple Electrolysis Tank System 7 platinum-plated electrodes

Using 7 platinum-plated electrodes in its tank, RW-7 increases the electrolysis efficiency up to 40%! The platinum-plated-electrodes stay clean at all time, to continuously produce more hydrogen. The platinum-plated electrodes are also power-efficient that sustainably supply quality soft water as well.



7 platinum-plated electrodes

The highest water flow performance for home use (9 liter per minute)

Employing 7 platinum-plated electrodes, RW-7 is capable of producing Antioxidant Water of 6 liter per minute as much as Electrolyzed Acidic Water of 3 liter per minute, in total of 9 liter per minute of water can be electrolyzed.

Bleep and Lamp Indication for Replacement of Water Cleaning Cartridge

An indicator on the LCD display to tell you when the water cleaning cartridge needs replacing.

Equipped with a large-size LCD panel! Clearly shows the status of RW-7

The large LCD panel displays a variety of information.



- displays with color and text for the type of water being generated, illustrations for the proposes of Usage
- displays a cartridge's accumulated flow volume and operating time
- show the toll-free number for customer support etc

Kitchen Timer

Can be set in seconds, the buzzer sounds when time is up. Useful for dishes that requires time management.



Removes 13 substances in tap water, which JIS specified subject for removal, for 14 tons.

PREMIUM Micro Carbon Cartridge

The micro carbon cartridge is composed of activated carbon (micro-carbon) with very fine materials, which effectively adsorbs turbidity and particles in water with our innovative mould, just micro carbon by itself is capable of removing 13 substances*1. [The first in the industry]*2 In addition, the filtration material of the cartridge is made to prevent clogging; therefore, it would not interfere a flow of water.

*1 13 substances in tap water are specified by JIS S3201 testing method, and subjected for removal. *2 as December 2009

substances subjected for removal (total filtration quantity : 14 tons)	
1. Chlorine Residual (Chalk)	7. Puromohorum
2. Turbidity	8. Tetrachlorethylene
3. Total Trihalomethanes*3	9. Trichlorethylene
4. Chloroform	10. 1,1,1 - Trichloroethane
5. Promo Dichloromethane	11. CAT (pesticides)
6. Dibromochloromethane	12. 2-MIB (musty odor)
	13. Lead Solubility

*Total Torihametan*3 is the generic name for four substances of 4 to 7 above.



Micro Carbon

(very fine activated carbon)

Carbonate porous materials with a myriad of internal pores, removes 13 substances in tap water, which JIS (Japan Industrial Standards) specified.

Nonwoven Fabric

Porous sheet bonded structure superimposed on a three-dimensional fiber. The larger particles are removed before passing through the micro carbon.

Micro carbon cartridge needs to be replaced after one year or use of 14 tons of water.

Water is the source of life.
 Healthy life begins with safe water.
 Antioxidant Water is the quality water that supports you and your family's healthy and beautiful life.
 Knowing proper usage of Antioxidant Water enhances quality of your life.

Antioxidant Water

hydrogen-rich water, produced in negative electrode by electrolysis. can be used for drink and cooking.



drinking



As good as drinking directly, it also brings out tastes of tea and coffee.

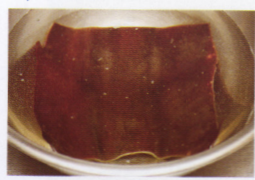
cooking

Simmered dishes like stews, it brings out the flavor and the tastes of the ingredients.



soup

With Antioxidant water, clear and elegant taste soup stock can be made.



removing harshness

It can be used to remove harshness of food.



Electrolyzed Acidic Water

Oxygen-rich water, produced in positive electrode by electrolysis. It is recommended for daily face washing and skin cares.

face washing



cooking



cleaning

Since it helps remove stain and is easier to dry, suitable for wiping. can be used for soaking wash of kitchenware.



Recommending Electrolyzed Acidic Water on steamed cotton towels or cotton pack for daily skin care.

Purified Water

Water for taking medicine and feeding babies the water has not been electrolysis, yet residual chlorine and chlorine odor contained in the tap water are removed with the high-performance cartridge removed.





Examples of Faucet for Standard Installation

The faucet types that are often seen nowadays, which can be installed with the standard mounting adapter sets. In some case, the standard mounting adapter sets may not be fit, because of a diameter of bubble bracket or spacing of screw.



Installation of Faucet Separation Plug

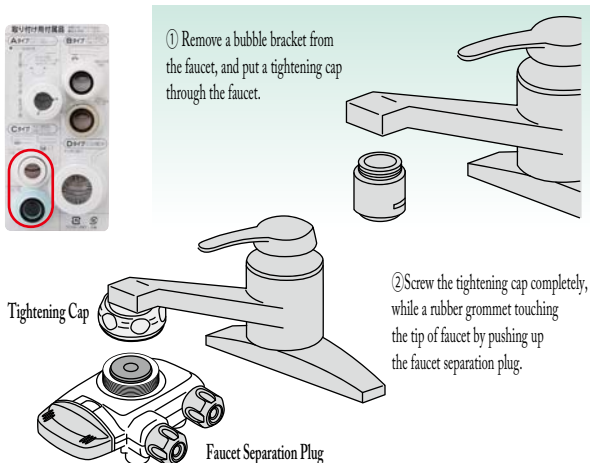
- A** タイプ
- Faucet pipe diameter (16mm, 17.5mm, 19mm)
 - Use type A mounting adapter for a faucet that has a swelled round shape on its tip.



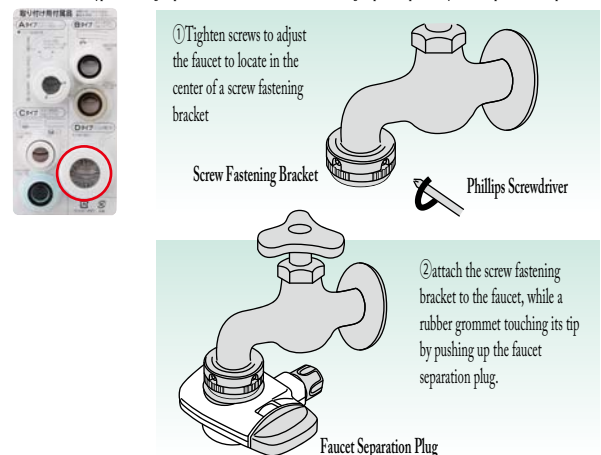
- B** タイプ
- An out-warded screw groove is revealed by removing a bubble bracket on the tip of faucet.
 - Use type B mounting adapter for an out-warded screw groove.



- C** タイプ
- An int-warded screw groove is revealed by removing a bubble bracket on the tip of faucet.
 - Use type C mounting adapter for an in-warded screw groove.



- D** タイプ
- A faucet that has a round shaped tip
 - Use type D mounting adapter for a faucet does not have a swelled round shape on its tip.
- ※ Type D mounting adapter set is not included in the standard mounting adapter sets, please ask your sales representative for purchase.



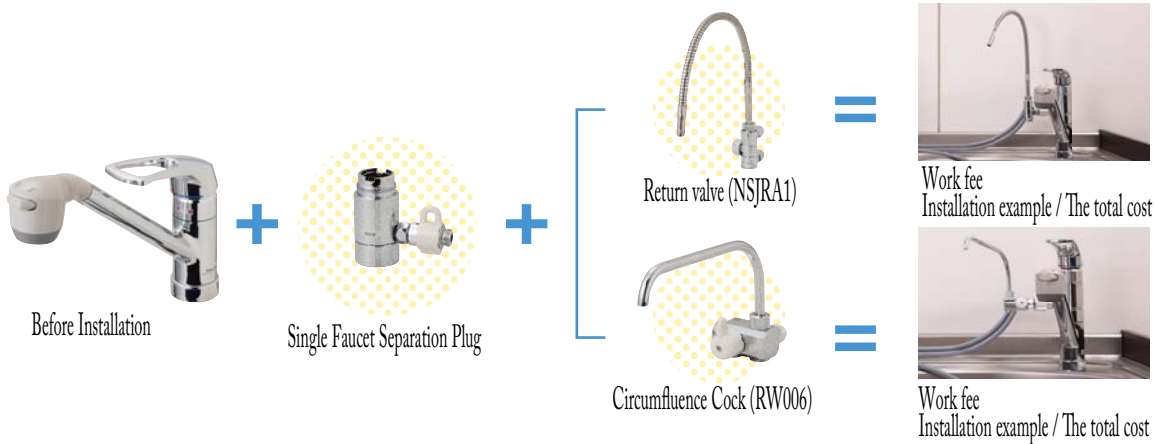


Examples of Incidental Installations

Illustrations of using dedicated parts with a little ingenuity for installation.

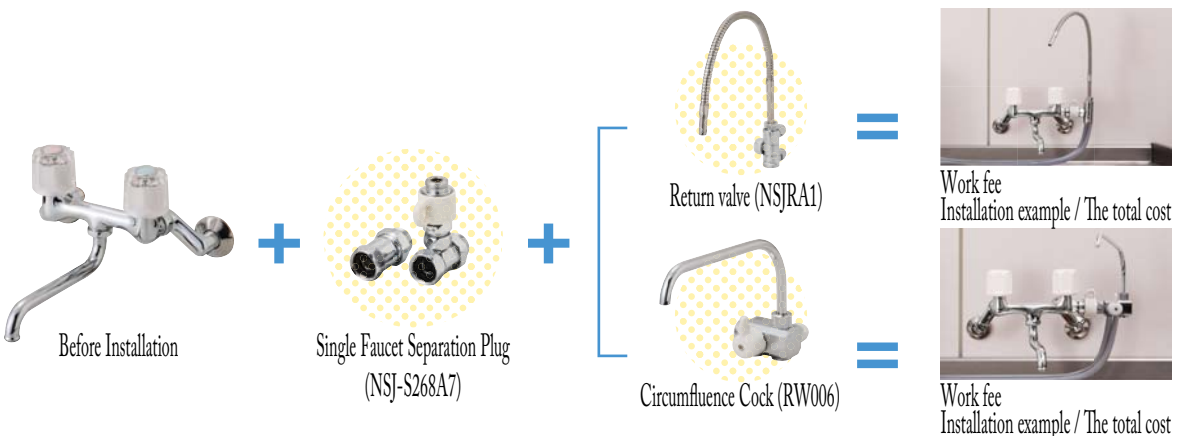
Single Faucet Separation Plug Installation Example 1

In case of having a kitchen faucet for which a standard installation can not be applied. Especially suitable for a kitchen that cannot be remodeled. Since necessary parts are vary, depending on the faucet, its Information like a manufacture name and model would be needed for this installation.



Single Faucet Separation Plug Installation Example 2

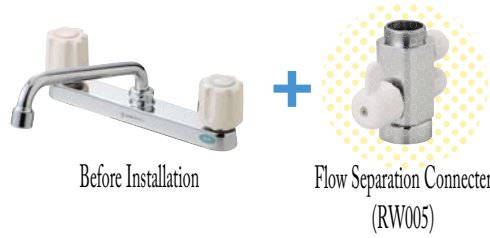
In case of the wall-mounted kitchen faucet for which a standard installation can not be applied.



Other Installation

For your reference, there is an installation to improve usability.

● A faucet, capable of detaching the drain pipe



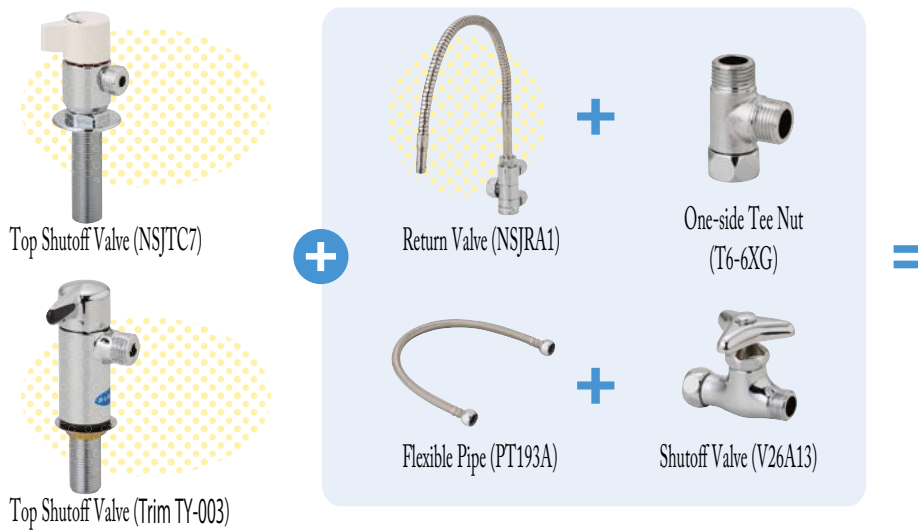
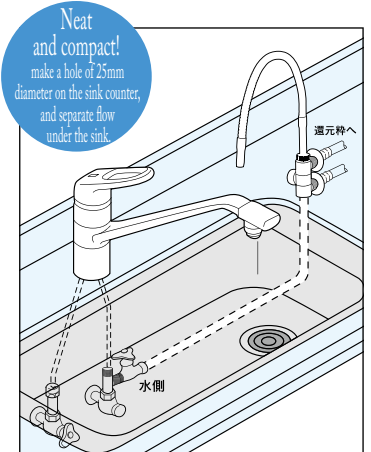
Work fee
Installation example / The total cost

Dedicated Faucet Installation Example

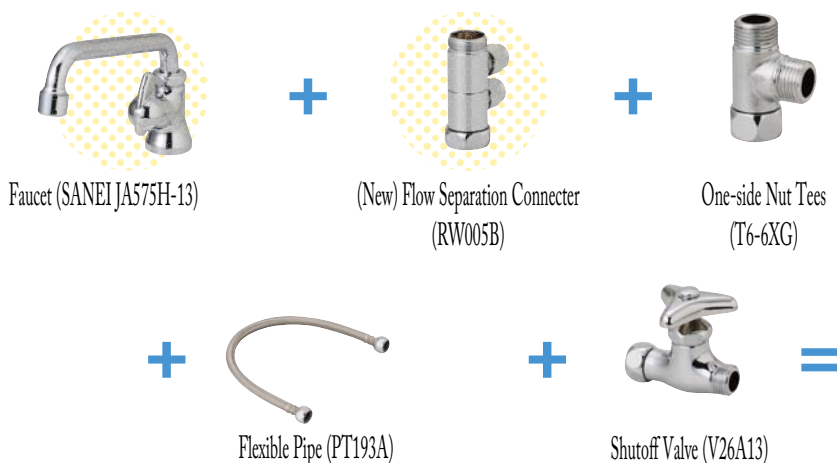
For a case where a standard installation may not be suitable, or for a customer requesting better usability.

※ The printed prices are only for a criterion, and it may vary depending on the install location and circumstances.

※ Please ask your sales representative for requesting other types of faucets.



Work fee
Installation example / The total cost



Work fee
Installation example / The total cost

Flow Separation Plug Installation Example

In case of currently using a flow separator for dishwasher.

※The printed prices are only for a criterion, and it may vary depending on the install location and circumstances. ※Please ask your sale representative for requesting other type of faucets.

using a dishwasher and KANGENSUI simultaneously

Single Faucet Separation Plug

KANGENSUI

Dishwasher

Before Installation

2-way Separation Cock (NS-K6)

Intake Connector J (NSJJ6AN)

Flow Separation Cock for NSJ (NSG1313)

Return valve (NSJRA1)

Circumfluence Cock (RW006)

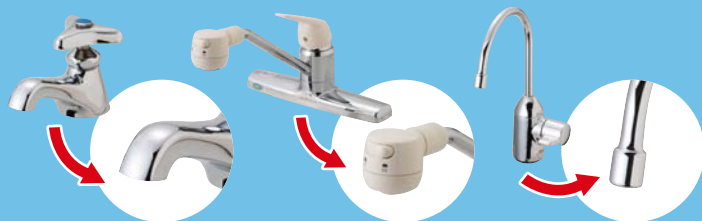
Work fee Installation example / The total cost

Work fee Installation example / The total cost



The faucets, standard installation cannot be applied

The faucet, which has odd-shaped cylinders like rectangular or round-shaped with a smaller diameter (a standard faucet has round shape cylinder). Also, the faucet, which shapes like a bathroom shower, or has a dedicated built-in (under sink) type faucet for water purifier. All of these faucets cannot be applied with a standard installation, and they require additional works for installation of KANGENSUI.



Consumable Supplies



RW501
Micro Carbon Cartridge
(14tons or 1 year replacement)



RW002A(①+②)
(New) Standard Faucet
Separation Plug
and Adapter Set

RW003A(②)
(New) Standard Faucet
Separation Plug



RW004B
(New) Standard Adapter Set
RW016
Suckers for fixing Drain Hoes



RW020A
Primary Filter Case Set
(Lead removal)

PF204K3
Replacement Filters
(a Set of Three)



RW020
Primary Filter
Replacement Filter Set

HV98PK5
Replacement Filters
(a Set of Five)



RW012A
Drain Hoes(1m)

RW013A
Twin Hoes (1m)

RW011
Hoes Sets
(Twin Hoes and Drain Hoes,
1.5m each)